



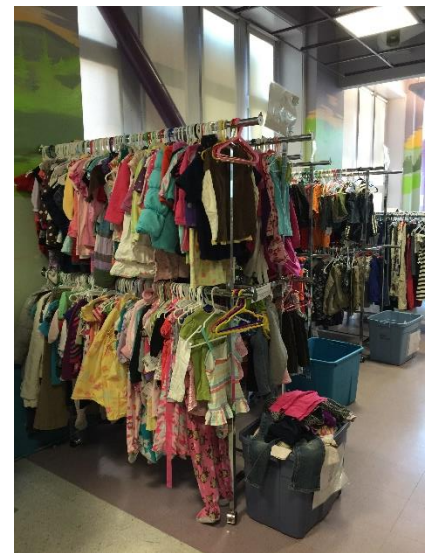
In-Kind Donation Wish List

The Family Support Center is always in need of in-kind donations to directly support the families we work with. Your donations will also support the families staying at Pear Blossom Place: A Family Support Community, our 24-hour homeless family shelter.



We are currently in need of:

- Tarps & Camping supplies
- Flash lights and AAA batteries
- Bus passes (monthly or daily)
- Gift cards to grocery & shopping centers (i.e. Safeway, Fred Meyer, Wal-Mart, for gas)
- Hygiene supplies (shampoo, soap, razors, deodorant, hand sanitizer, feminine hygiene products)
- Car seats & booster seats (must not be recalled or expired)
- Diapers- especially large sizes 4, 5, 6 and pull-ups
- Baby wipes
- Socks & underwear (boys & girls, new in package only please)
- Large bath towels (gently used or new)
- Laundry soap
- Dish soap, sponges
- Children's clothing (new or gently used, season appropriate)
- Children's shoes and jackets
- Professional clothing for men and women
- Non-perishable snacks
- Coffee, creamer and sugar...to-go cups with lids!



You're welcome to bring your donation to our main office at **201 Capitol Way N** in downtown Olympia Monday-Friday from 9am-5pm. There is a loading zone in front of the building; pull right up and we will help you!

Have questions? Give us a call at 360-754-9297 x200

Your donation may be tax deductible. Always consult your tax advisor. Tax ID: 91-2003828